

PQ Welcome to BootMagic



Supported Operating Systems

 **Trademarks**

<http://www.powerquest.com>
sales@powerquest.com

After Installing BootMagic

NOTE:
System

[Finding the Right Operating](#)

 **Additional Resources**

<http://www.powerquest.com>

How to Use Help

green

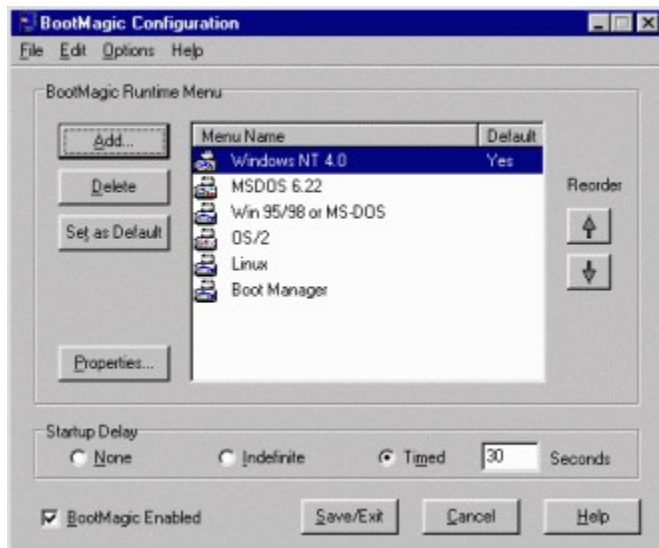
BLUE

NOTE:

RED

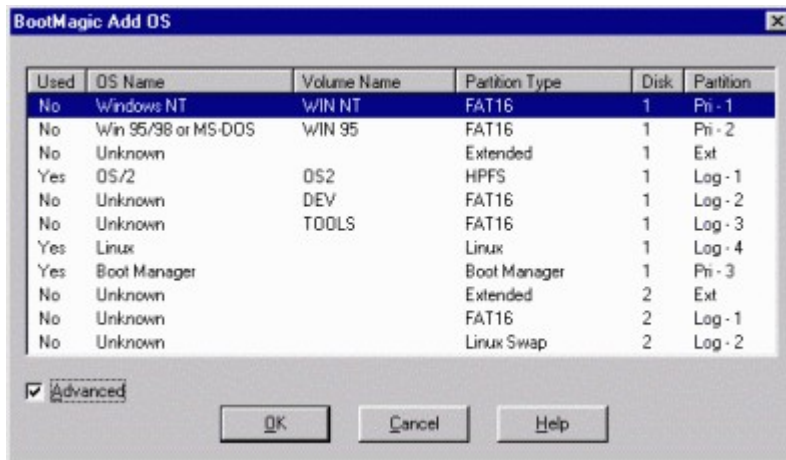
WARNING!

BootMagic Configuration Program Overview



NOTE:

PQ Adding an Operating System to the BootMagic Menu



The screenshot shows a window titled "BootMagic Add OS" with a table listing detected operating systems. The table has columns for "Used", "OS Name", "Volume Name", "Partition Type", "Disk", and "Partition". Below the table is a checked "Advanced" checkbox and three buttons: "OK", "Cancel", and "Help".

Used	OS Name	Volume Name	Partition Type	Disk	Partition
No	Windows NT	WIN NT	FAT16	1	Pri - 1
No	Win 95/98 or MS-DOS	WIN 95	FAT16	1	Pri - 2
No	Unknown		Extended	1	Ext
Yes	OS/2	OS2	HPFS	1	Log - 1
No	Unknown	DEV	FAT16	1	Log - 2
No	Unknown	TODLS	FAT16	1	Log - 3
Yes	Linux		Linux	1	Log - 4
Yes	Boot Manager		Boot Manager	1	Pri - 3
No	Unknown		Extended	2	Ext
No	Unknown		FAT16	2	Log - 1
No	Unknown		Linux Swap	2	Log - 2

NOTE:

[Operating System](#)

[Finding the Right](#)

[the Right Operating System](#)

[Finding](#)

WARNING!

NOTE:

[BootMagic Menu Item Properties](#)

Finding the Right Operating System

NOTE:

[BootMagic Menu Item Properties](#)
[Removing an Operating System](#)

Modifying an Operating System's BootMagic Properties

NOTE:

[BootMagic Menu Item Properties](#)

BootMagic Menu Item Properties

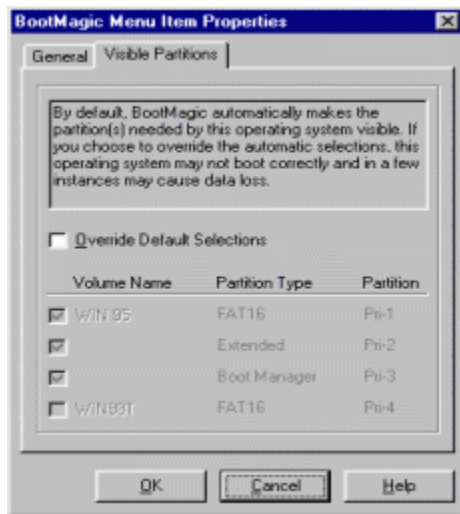
Partitions

General

Visible



NOTE:



NOTE:

Removing an Operating System from the BootMagic Menu

NOTE:

Setting a Default Operating System

NOTE:

[Setting the Startup Delay](#)

Setting the Startup Delay

NOTE:

NOTE:

Disabling BootMagic

NOTE:

NOTE:

Installing a New Operating System

[Creating an Operating System Boot Diskette](#)

NOTE:

[DOS](#)
[Windows 3.x](#)
[Windows 95/98](#)
[Windows NT](#)
[OS/2](#)
[BeOS](#)
[Linux](#)

[primary](#) [logical](#)



DOS - Installation Issues

NOTE:

[Booting Operating Systems From a Second Drive](#)



Windows 3.x - Installation Issues

NOTE:

DOS

NOTE:



Windows 95/98 - Installation Issues

NOTE:

[Booting Operating Systems From a Second Drive](#)

NOTE:

Windows NT 3.5x/4.0 - Installation Issues

NOTE:

[Visible Partitions](#)



OS/2 - Installation Issues

NOTE:

<ftp://ftp.software.ibm.com/ps/products/os2/os2ddpak/idedasd.exe>



BeOS - Installation Issues



Linux - Installation Issues

Booting Operating Systems From a Second Drive

NOTE:

[DOS](#)
[Windows 3.x](#)
[Windows 95/98](#)
[Windows NT](#)
[OS/2](#)
[BeOS](#)
[Linux](#)

NOTE:

Third Drive Booting and Beyond

Boot Management Software

Drive Overlay Software

NOTE:

Anti-Virus Software

Frequently-Asked Questions

NOTE:

NOTE:

[Adding an Operating System](#)

Right Operating System

Finding the

Right Operating System

Finding the

Right Operating System

Finding the

Recovering a Failed Operating System

[DOS](#) [Windows 95/98](#)

[Windows NT](#)

NOTE:

NOTE:

[Creating an Operating System Boot Diskette](#)

NOTE:

NOTE:

NOTE:

NOTE:

NOTE:

Creating an Operating System Boot Diskette



Error Messages and Solutions

[General Errors \(0-49\)](#)

[Menu Item & Configuration Errors \(50-99\)](#)

[Boot Errors \(100-149\)](#)

[File and Disk I/O Errors \(150-199\)](#)

[Parser Read/Write and General Errors \(200-249\)](#)

[Partition Table and Boot Record Errors \(250-274\)](#)

[BootMagic Configuration Errors \(1000-1499\)](#)

NOTE:

<http://www.powerquest.com>

[PowerQuest Technical Support](#)

[Anti-Virus Software](#) [Drive Overlay Software](#)

[Anti-Virus Software](#) [Drive Overlay Software](#)

[PowerQuest Technical Support](#)

 **PowerQuest Technical Support**

<http://www.powerquest.com>

[PowerQuest Problem Report](#)

[PowerQuest Problem](#)

[Report](#)

support@powerquest.com

italian@powerquest.com

latina@powerquest.com

spanish@powerquest.com

euots@powerquest.com

euots@powerquest.com

euots@powerquest.com

france@powerquest.com

germany@powerquest.com

[PowerQuest Problem Report](#)

[PowerQuest Problem Report](#)

Problem Report

